

RISING CLAMP TERMINALS

PROFESSIONAL RISING CLAMP

Quality Camden terminal blocks offer Rising Clamp actuation.

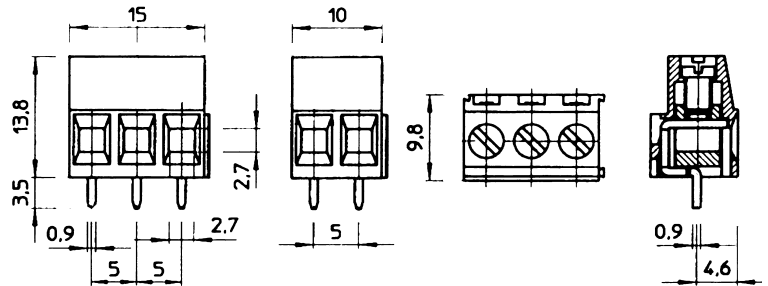
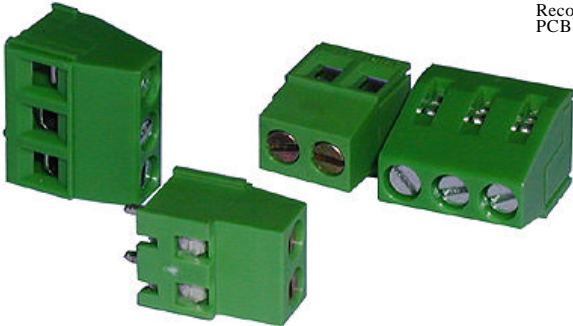
- FEATURES:**
- 5.0mm Pitch Rising clamp
 - Interlocking 2-12
 - Rating 24A
 - Captive screws
 - Flame retardant material
 - 3.0mm² Wire Acceptance
 - Captive screws
 - UL Approved E7340
 - To VDE 0110 Standards

SPECIFICATIONS

- Rating: 20A/250V
 Dielectric strength: >2.5kv
 Insulation resistance: >5Mohm
 Working temperature: -20°C to 125°C
 Short period: 160°C
 Moulding: UL94-VO flame retardant PA66
 Pin/terminal: 5 micron tin plated, nickel plated brass
 Screw/torque: M3 steel/5nm colour passivated & tropicalised
 Recommended PCB hole size: F 1.3mm

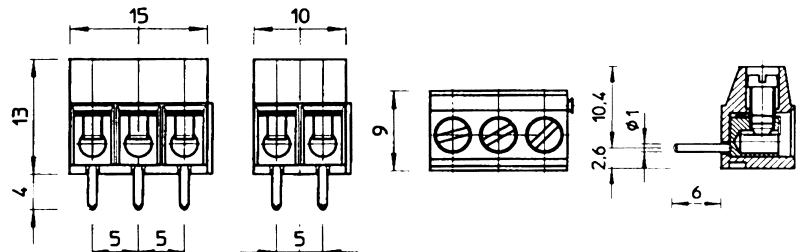


VERTICAL MOUNTING



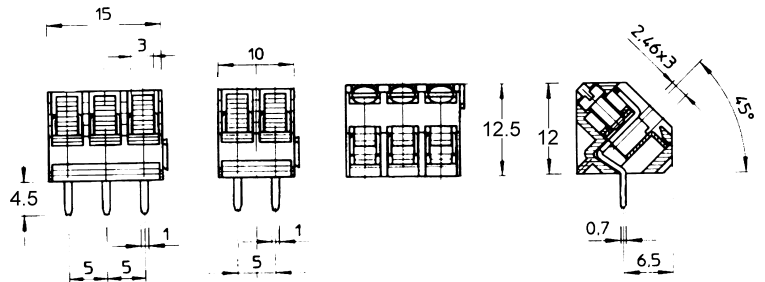
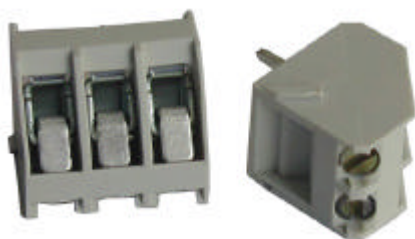
Part Number	Type
CTB0100/2	2 Way
CTB0100/3	3 Way

90° MOUNTING



Part Number	Type
CTB0150/2	2 Way
CTB0150/3	3 Way

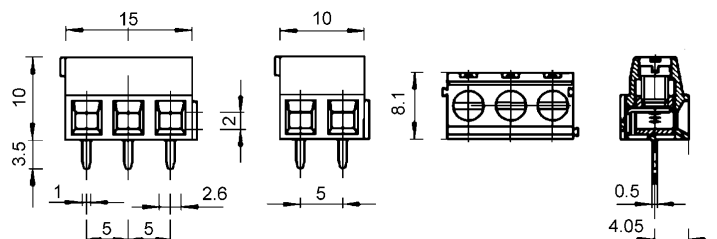
45° MOUNTING



Part Number	Type
CTB3000/2	2 Way
CTB3000/3	3 Way

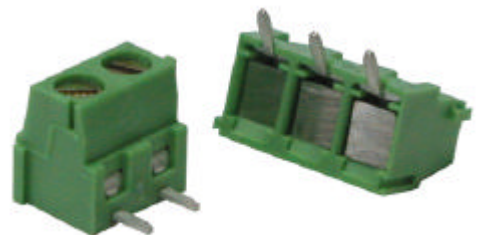
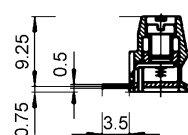
LOW PROFILE 5MM PITCH RISING CLAMP TERMINAL LOW PROFILE

- FEATURES:**
- 5.0mm Pitch Rising clamp
 - 2 & 3 pole double interlocking mechanism for increased strength.
 - Rating 17.5A/250V
 - Captive screws
 - Flame retardant material
 - 1.5mm² Wire Acceptance
 - UL Approved E7340
 - To VDE 0110 Standards



Part Number	Type
CTB0500/2	2 Way
CTB0500/3	3 Way

LOW PROFILE 90DEG MOUNT



Part Number	Type
CTB0550/2	2 Way
CTB0550/3	3 Way