




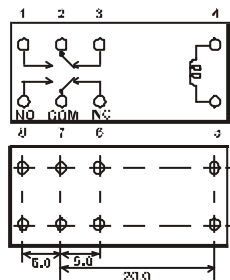


## FUJITSU TAKAMISAWA RELAY SELECTION GUIDE

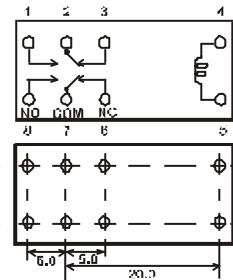
## Power Relays

Series Name	FTR-F1	FBR620	VB	VH	VF
Overview					
W x L x H (mm)	12.6 x 29.0 x 18.5	12.6 x 28.7 x 24.7	12.9 x 29.2 x 25.3	16.0 x 30.1 x 30.0	32.2 x 50.0 x 24.1
Unit Mass (Approx)	10.0g	16.0g	17.0g	35.0g	55.0g
Contact Arrangement	2a, 2c (2 Form A, C)	2a, 2b, 2c (2 Form A, E, G)	2a, 2c (2 Form A, C)	1a (1 Form A)	1a (1 Form A)
Contact Rating (A)	(7A Carry) 5A	(7A Carry) 5A	(7A Carry) 5A 5A	(20A Carry) 16A	(30A, 25A, 20A Carry) 30A 25A 20A
Minimum Switching Load (ref.)	6VDC 10mA	6VDC 100mA	6VDC 100mA 6VDC 10mA	6VDC 100mA	6VDC 100mA
Contact Rating (Resistive Load)	24 VDC/250 VAC 5A	30 VDC/250 VAC 5A	24 VDC/250 VAC 5A	250 VAC 16A	250 VAC 20 to 30A
Coil Voltage (DC)	5 to 48 V	5 to 80 V	3 to 100 V	5 to 60 V	5 to 80 V
Nominal Power (DC)	0.58 W	0.5 W	0.53W/ 0.75 W	0.9 to 1.0 W	1.2 W
Dielectric Strength	Open Contacts	1,000 VAC	1,000 VAC	1,000 VAC	1,200 VAC
	Coil and Contacts	5,000 VAC	5,000 VAC	5,000 VAC	4,000 VAC
Surge Strength (Coil and Contacts)	10,000 V	10,000 V	10,000 V	7,000 V	10,000 V
Expected Life	Mechanical	$20 \times 10^6$ ops	$20 \times 10^6$ ops	$20 \times 10^6$ ops	$5 \times 10^6$ ops
	Electrical (Rated Load)	$100 \times 10^3$ ops	$100 \times 10^3$ ops (DC) $200 \times 10^3$ ops (AC)	$100 \times 10^3$ ops	$200 \times 10^3$ ops
Safety Standards	Conforms to UL, CSA, VDE, FMVCO, SEMKO, IEC	UL, CSA	UL, CSA, VDE, SEMKO, FMVCO, IEC	UL, CSA	UL, CSA, VDE
Remarks	Plastic Sealed Type Compatible with VR & FBR620 Type IV-3 type available	Plastic Sealed Type available	Plastic Sealed Type TV-3 type available	Flux Free Type Tab-terminal (#250) IV-10 type	Flux Free Type Tab-terminal IV-10 type available

**FUJITSU  
TAKAMISAWA  
RELAYS**

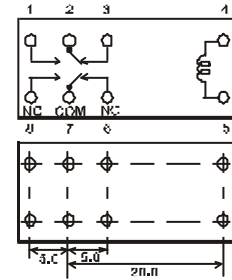


Part Number	Voltage
FTR-F1CA06V	6V
FTR-F1CA012V	12V
FTR-F1CA024V	24V
FTR-F1CA048V	48V



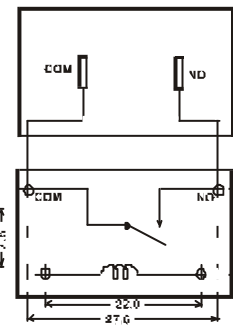
Part Number	Voltage
FBR621-DO12M	12V
FBR621-DO24M	24V

Same as:  
FTR-F1  
HRM1H

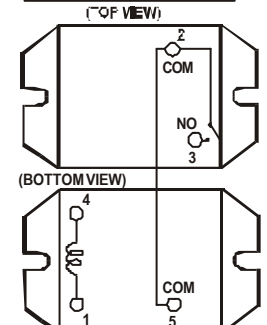


Part Number	Voltage
VB-5V	5V
VB-12V	12V
VB-24V	24V

Same as:  
FTR-F1  
HRM1H



Part Number	Voltage
VH-5V	5V
VH-12-UL	12V



Part Number	Voltage
VF-12V	12V
VF-24H	24V