

MAINS POWER ACCESSORIES

SURFACE MOUNT SOCKET

Surface base socket, 3 pin flat.
*Rated: 10 Amp 240 Volts



Part Number
P8234

BLANK PLATE

Blank plate used to cover or drill to suit.
Fits standard electrical wall box.
Suits P8045 & P8047



Part Number
P8040

MAINS PLUG

240 Volts AC 10 Amp



Part Number	Type
CL1439G	Grey
CL1439TR	Clear
CL1439W	White

INLINE MAINS SOCKET

Extension socket 3 pin flat with lock nut. 10A 240VAC



Part Number	Type
P8230	Grey
CL1438TR	Clear

MOUNTING BLOCKS

For mounting standard size plate.



Part Number	Size
P8045	38mm Deep
P8047	13mm Deep

POWER OUTLETS



Standard 10 Amp power point

Part Number	Type
P8240	Single
P8245	Double

POWERBOARD

Protects electronic equipment from power surges. 4 protected outlets & overload cutout.



Part Number	Description
P840	4 Way
P8265	8 Way

MAINS EXTENSION LEADS

Features piggy back plug. 10Amp



Part Number	Length
P8270	6 Metres
P8275	10 Metres

MAINS LEADS

All mains plug to bare cable 1.8m long.



Part Number	Style	Rating
A2400	3 Pin	7.5 A
A2401	2 Pin	7.5 A
I23PG	3 Pin Grey	10 A
I23PB	3 Pin Black	10 A

IEC APPLIANCE CONNECTORS

3 pin IEC chassis "clip" mount male socket - solder terminating. 3mm panel. Approval #CS6244N



Part Number
IEC1

3 pin IEC male chassis socket. Solder terminating. 3mm panel. Approval #CS6244N



Part Number
IEC2

3 pin IEC chassis "clip" mount male socket M205 fuse holder - solder terminating. 3mm panel. Approval #CS6244N



Part Number
IEC3

3 pin IEC male chassis socket with built in M205 fuse holder. 3mm panel. Approval #CS6244N



Part Number
IEC4

3 pin IEC chassis "clip" mount female socket - solder terminating. 3mm panel. Approval #CS6244N



Part Number
IEC5

3 pin IEC female chassis socket. Solder terminating. 3mm panel. Approval #CS6244N



Part Number
IEC6

Small PVC boot designed to fit onto cable behind our IEC panel sockets IEC1 and IEC2.



Part Number
L1867

Large PVC boot designed to fit onto cable behind our IEC panel sockets IEC3, IEC4, IEC5, and IEC6.



Part Number
L1869

3 pin IEC chassis mount with male/female sockets. Clip mount. Solder terminating. 3mm panel. Approval #CS6244N



Part Number
IEC7

3 pin IEC male inline plug. Screw terminating. Approval #N14623



Part Number
IEC12

3 pin IEC female inline right angle socket. Screw terminating. Approval # N14623



Part Number
IEC14

3 pin IEC female inline socket. Screw terminating. Approval #N14623



Part Number
IEC15

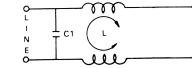
3 pin IEC chassis clip mount male socket M205 fuse holder - solder terminating, with switch. 3mm panel



Part Number
P8340

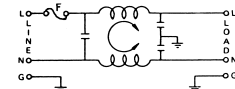
IEC FILTERS :

Compact IEC connector with General purpose EMI Filter for suppression of line to ground noise. Rating: 10Amp



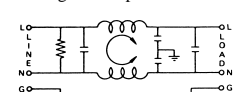
Part Number
10DEEG3M

Compact IEC connector with General purpose EMI Filter for suppression of line to ground noise fitted with M205 style fuseholder. Rating: 6Amp



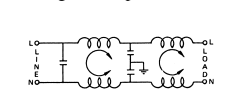
Part Number
P8370

High performance filters for control of EMI suppression of both Line to Line and Line to Ground noise. Rating: 5Amp



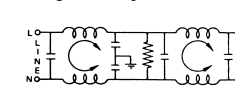
Part Number
O5DKAG5

Two stage high performance IEC connector filters. Rating: 6Amp



Part Number
O3SEEG3H

High performance two stage filters providing suppressing both line to line and line to ground noise for low impedance applications such as motors and switching power supplies. Rating: 10 Amp



Part Number
10DRCW5

IEC POWER LEAD

All Cables 1.8m long. 6 Amp



Part Number	Style
PL6	3 Pin Mains to IEC
PL8	IEC Fem to IEC Male